



P.O. Box 226
596 Ridge Road
Monmouth Jct., NJ 08852
New Jersey 08852, USA
Ph: (732) 329-4666
Fax: (732) 329-9422
sales@oilco-usa.com

Loading Arm Data Sheet

If you are planning a new liquid loader installation, use this bulletin to supply OILCO with any information that would assist us in providing you with the most efficient system. Use the first page for general information. Fill in specific dimensions and other details on the page which fits your proposed installation arrangement. Tank truck top loading data is on page 2, bottom loading data is on page 3, and tank car loading/unloading is on page 4.

1. **Vehicle**

(A) To be loaded or unloaded

(B) Tank truck or tank car

2. Loading operation will be dome or closed tight fill

3. Loading unit is to serve both sides of loading rack / island? YES NO

4. Riser connection is

(A) Flange Threaded Welded

(B) Size _____

5. Desired size of loading arm _____

6. Loading arm design

(A) Rigid tube Slide sleeve Pantagraph arm Long range

Bottom loading Vapor recovery

(B) Spring balance Counter weight No balance

(C) OILCO model _____

(D) Dimension variations? _____

7. Product to be handled _____

(A) Temperature _____

(B) Line pressure _____ (psi), or vacuum suction _____

(C) Flow rate _____ (gpm)

8. Material of construction

(a) Metal - Carbon steel Stainless steel Aluminum

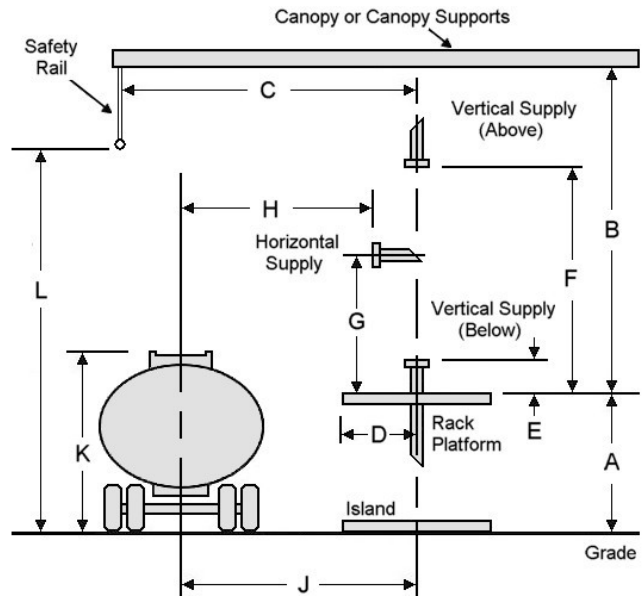
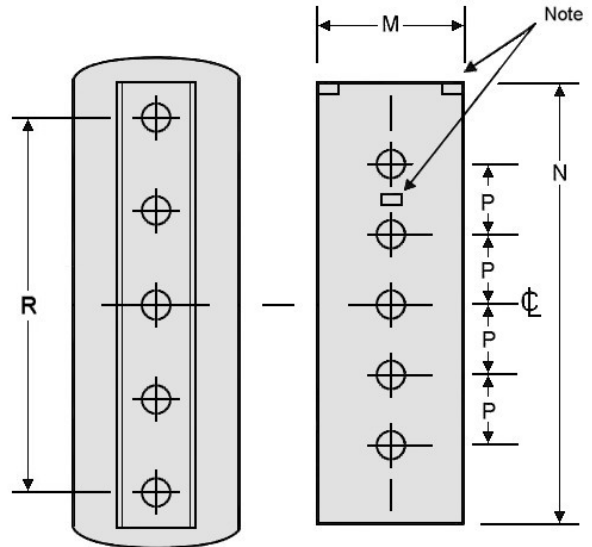
(B) Packing - Buna-N Viton Teflon Chemrez Kalrez

EPDM EPR Other



P.O. Box 226
 596 Ridge Road
 Monmouth Jct., NJ 08852
 New Jersey 08852, USA
 Ph: (732) 329-4666
 Fax: (732) 329-9422
 sales@oilco-usa.com

- A. Rack platform height from grade _____
- B. Overhead clearance _____
- C. Distance, C/L to safety rail _____
- D. Platform width, C/L of riser to the loading edge of the vehicle _____
- E. Riser connection height _____
- F. Riser connection height _____
- G. Riser connection height _____
- H. Platform clearance from C/L
 Minimum _____
 Maximum _____
- J. Distance from C/L to C/L
 Minimum _____
 Maximum _____
- K. Tank truck height from grade
 Minimum _____
 Maximum _____
- L. Safety rail height from grade _____
- M. Platform width _____
- N. Platform length _____
- P. Riser spacing on centers _____
 Number of risers _____
 Number of arms _____
- R. Overall range of hatch opening _____



Note: indicate location of any possible obstruction on platform, such as roof supports, equipment between risers, etc.



P.O. Box 226
 596 Ridge Road
 Monmouth Jct., NJ 08852
 New Jersey 08852, USA
 Ph: (732) 329-4666
 Fax: (732) 329-9422
 sales@oilco-usa.com

Loading Arm Design Data Tank Truck Loading

A. Overhead clearance _____

B. Island height _____

C. Riser connection _____

D. Reach, C/L of riser to face of coupler adapter _____

E. Tank overhang, beyond face of coupler adapter _____

F. Coupler adapter height, C/L of coupler to grade _____

M. Island width _____

N. Island length _____

P. Riser spacing on centers _____

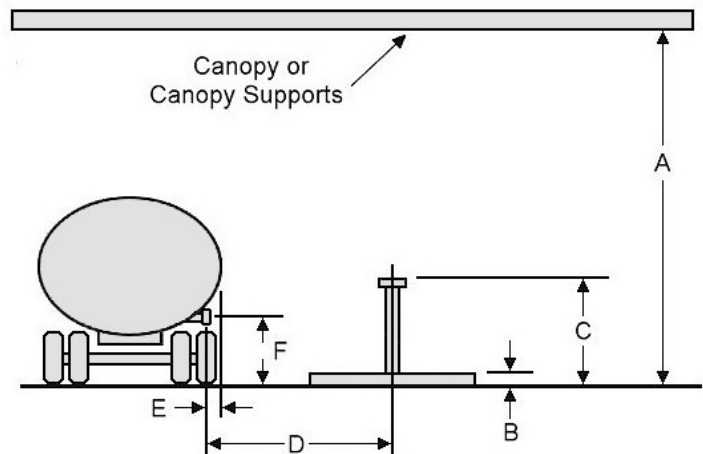
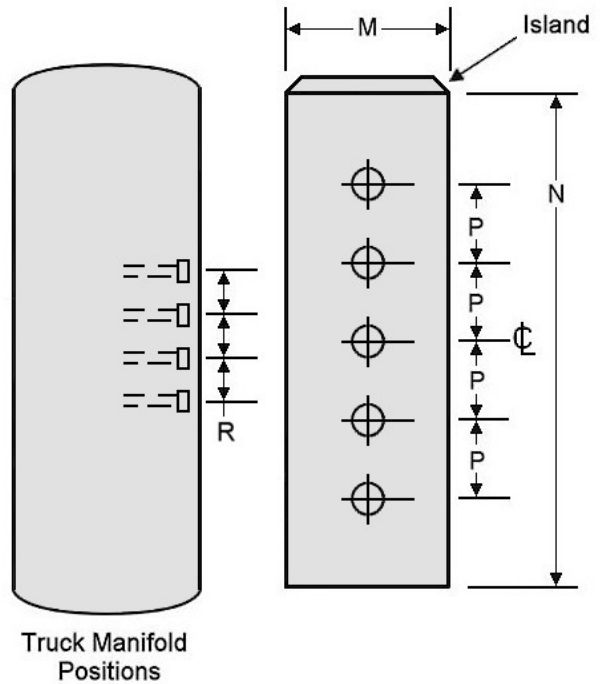
Number of risers _____

Number of arms _____

R. Coupler adapter spacing on centers _____

Number of couplers _____

Make of coupler _____





Loading Arm Design Data Tank Car Loading and Unloading

- A. Riser connection height above rail (from above) _____
- B. Riser connection height above rail supply (from below) _____
- C. Reach, C/L of riser to C/L of tank car _____
- D. Dome opening or connection height above rail _____

Note:

(1) Indicate connection points; Top Front Rear Right Left

(2) Type of connection _____

- E. Bottom connection height _____

(1) Type of connection _____

